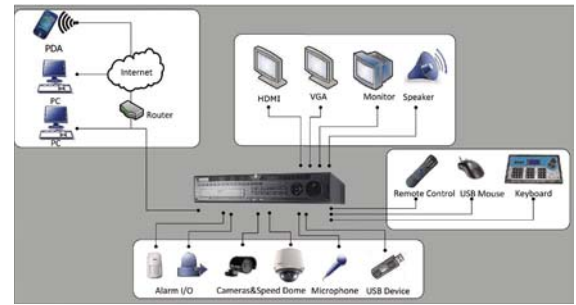


DS-9104/9108/9116HWI-ST 960H High-end DVR



Key features

- H.264 video compression
- WD1(PAL:960×576,NTSC:960×480) resolution real-time recording
- HDMI and VGA output at up to 1920×1080P resolution
- 4/8/16-ch synchronous playback
- HDD quota and group management
- Dual Gigabit network interfaces

Rear Panel of DS-9116HWI-ST



1. Video in
2. Video loop out
3. Video spot out
4. Video out
5. CVBS audio out, VGA audio out
6. Line in
7. Audio in, RCA connector
8. Audio in, DB26 connector
9. RS-232 serial interface
10. VGA interface
11. HDMI interface
12. eSATA interface
13. LAN1, LAN2 network interface
14. Termination switch
15. RS-485 serial interface, keyboard Interface, alarm in, alarm out
16. GND
17. 100~240 VAC power input
18. Power switch

Specifications

	DS-9104HWI-ST	DS-9108HWI-ST	DS-9116HWI-ST
Video / Audio input			
Video compression	H.264		
Analog video input	4-ch, BNC(1.0Vp-p, 75Ω), PAL/NTSC self-adaptive	8-ch, BNC(1.0Vp-p, 75Ω), PAL/NTSC self-adaptive	16-ch, BNC(1.0Vp-p, 75Ω), PAL/NTSC self-adaptive
Audio compression	OggVorbis		
Audio input	4-ch, RCA (2.0Vp-p, 1kΩ)	8-ch, Audio 1-4: RCA (2.0Vp-p, 1kΩ) Audio 5-8: DB26 connector	16-ch, Audio 1-4: RCA (2.0Vp-p, 1kΩ) Audio 5-16: DB26 connector
Voice talk input	1-ch, BNC (2.0Vp-p, 1kΩ)		
Video / Audio output			
HDMI / VGA output	1-ch, resolution: 1024×768/60Hz, 1280×720/60Hz, 1280×1024/60Hz, 1600×1200/60Hz, 1920×1080/60Hz(1080P),		
CVBS output	1-ch, BNC (1.0Vp-p, 75Ω), resolution: PAL: 704×576, NTSC: 704×480		
Video spot output	1-ch, BNC (1.0Vp-p, 75Ω), resolution: PAL: 704×576, NTSC: 704×480	4-ch, BNC (1.0Vp-p, 75Ω), resolution: PAL: 704×576, NTSC: 704×480	4-ch, BNC (1.0Vp-p, 75Ω), resolution: PAL: 704×576, NTSC: 704×480
Video loop out	4-ch	8-ch	16-ch
Encoding resolution	WD1 / 4CIF / 2CIF / CIF / QCIF		
Frame rate	25fps (P) / 30fps (N)		
Video bit rate	32 Kbps-2048 Kbps, or user defined (Max. 8192 Kbps)		
Audio output	2-ch, RCA (2.0 Vp-p, 1 kΩ)		
Audio bit rate	16kbps		
Dual-stream	Support		
Stream type	Video, Video & Audio		
Playback resolution	WD1 / 4CIF / 2CIF / CIF / QCIF		
Synchronous playback	4-ch	8-ch	16-ch
Hard disk			
SATA	8 SATA interfaces		
eSATA	1 eSATA interface		
Capacity	Up to 4TB capacity for each disk		
External interface			
Network interface	2, RJ45 10M / 100M / 1000M self-adaptive ethernet interface		
Serial interface	1 RS-232 interface (for parameters configuration, maintenance, transparent channel); 1 RS-485 interface (for PTZ control); 1 RS-485 keyboard interface (for special keyboard control)		
USB interface	2 x USB2.0		
Alarm in	4	16	16
Alarm out	2	4	4
General			
Power supply	AC 220V, 47--63Hz		
Consumption	≤ 70W (without hard disk or DVD-R/W)		
Working temperature	-10°C ~ +55°C (14°F ~ 131°F)		
Working humidity	10% ~ 90%		
Chassis	19-inch rack-mounted 2U chassis		
Dimensions (W x D x H)	470 × 445 × 90 mm		
Weight	≤ 8kg (without hard disk or DVD-R/W)		