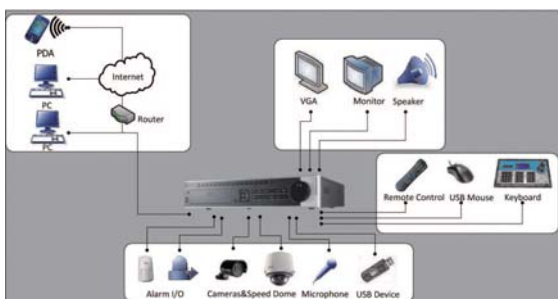


DS-8104/8108/8116HFI-ST Standalone DVR



Key Features

- H.264 video compression
- 4CIF resolution real time recording
- HDMI and VGA output at 1920×1080P resolution
- Dual-stream
- 4/8/16-ch synchronous playback
- SADP(IP Finder), FTP, NTP, DHCP protocols



Rear Panel of DS-8116HFI-ST



- | | |
|----------------------------|--|
| 1. Video in | 10. eSATA interface |
| 2. Audio in | 11. LAN interface |
| 3. Video spot out | 12. Termination switch |
| 4. Video out | 13. RS-485 serial interface, keyboard interface, alarm in, alarm out |
| 5. Audio out | 14. GND |
| 6. Line in | 15. 100~240 VAC power input |
| 7. RS-232 serial interface | 16. Power switch |
| 8. VGA interface | |
| 9. HDMI interface | |

Specifications

	DS-8104HFI-ST	DS-8108HFI-ST	DS-8116HFI-ST
Video / Audio input			
Video compression	H.264		
Analog video input	4-ch, BNC(1.0Vp-p, 75 Ω), PAL / NTSC self-adaptive	8-ch, BNC(1.0Vp-p, 75 Ω), PAL / NTSC self-adaptive	16-ch, BNC(1.0Vp-p, 75 Ω), PAL / NTSC self-adaptive
Audio compression	OggVorbis		
Audio input	4-ch, BNC (2.0 Vp-p, 1 kΩ)	8-ch, BNC (2.0 Vp-p, 1 kΩ)	16-ch, BNC (2.0 Vp-p, 1 kΩ)
Voice talk input	1-ch, BNC (2.0 Vp-p, 1 kΩ)		
Video / Audio output			
HDMI output	1-ch, resolution: 1920×1080P /60 Hz, 1920×1080P /50 Hz, 1600×1200 /60 Hz, 1280×1024 /60 Hz, 1280×720 /60 Hz, 1024×768 /60 Hz,		
VGA output	1-ch, resolution: 1920×1080P /60 Hz, 1600×1200 /60 Hz, 1280×1024 /60 Hz, 1280×720 /60 Hz, 1024×768 /60 Hz,		
CVBS output	1-ch, BNC (1.0 Vp-p, 75 Ω), resolution: PAL: 704×576, NTSC: 704×480		
Video spot output	1-ch, BNC (1.0 Vp-p, 75 Ω), resolution: PAL: 704×576, NTSC: 704×480		
Video loop out	Optional		
Encoding resolution	4CIF/ 2CIF / CIF / QCIF		
Frame rate	25 fps (P) /30 fps (N)		
Video bit rate	32 Kbps-2048 Kbps, or user defined (Max. 8192 Kbps)		
Audio output	2-ch, BNC (Linear, 600Ω)		
Audio bit rate	16 Kbps		
Dual-stream	Support		
Stream type	Video, Video & Audio		
Playback resolution	4CIF / 2CIF / CIF / QCIF		
Synchronous playback	4-ch	8-ch	16-ch
Hard disk			
SATA	8 SATA interfaces		
eSATA	1 eSATA interface		
Capacity	Up to 4TB capacity for each disk		
External interface			
Network interface	1 RJ45 10M / 100M / 1000M self-adaptive ethernet interface		
Serial interface	1 RS-232 interface (for parameters configuration, maintenance, transparent channel); 1 RS-485 interface (for PTZ control); 1 RS-485 keyboard interface (for special keyboard control)		
USB interface	2, USB2.0		
Alarm in	4	16	16
Alarm out	2	4	4
General			
Power supply	100~240 VAC, 6.3A, 50~60Hz		
Consumption	≤ 35W	≤ 40W	≤ 45W
Working temperature	-10 °C ~ +55 °C		
Working humidity	10%~90%		
Chassis	19-inch rack-mounted 2U chassis		
Dimensions (W × D × H)	445 × 470 × 90 mm		
Weight	≤ 8kg (without hard disk or DVD-R/W)		