

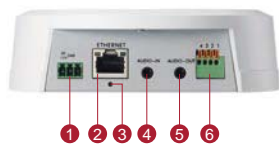
ACM-8511

IP D/N PoE PTZ Camera



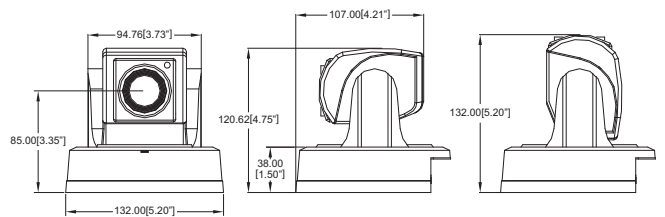
- 1/4" Interlaced Scan CCD
- Day and night function with Sense Up
- Minimum illumination 0.07 lux at F1.8
- 10 x optical zoom
- 25/30 fps at full D1 resolution
- Selectable MPEG-4 SP, MJPEG compressions
- Two-way audio
- Video motion detection
- Digital input and digital output
- Powered by PoE Class 3 / DC 12V
- ACM-8511N (NTSC) / ACM-8511P (PAL)

PHOTO INDICATION



- ① DC 12V Power Input
- ② Ethernet Port
- ③ Reset Button
- ④ Audio Input
- ⑤ Audio Output
- ⑥ Digital Input / Output




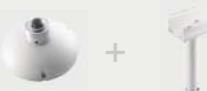

DIMENSION DIAGRAM



Unit: mm [inch]

ACCESSORY OPTIONS

Popular Mounting Solutions

Surface	Accessories not required
Wall	PMAX-0308 
Corner	PMAX-0101 PMAX-0303 PMAX-0402 
Flush	PMAX-1001 PMAX-1002 
Pendant	PMAX-0101 PMAX-0103 
Pole	PMAX-0101 PMAX-0303 PMAX-0502 

* For more mounting solutions, please refer to Mounting Accessory section of Buyer's Guide or Project Planner v2.0 on www.acti.com

PRODUCT SPECIFICATION

ACM-8511

• Device

Device Type	PTZ Camera
Image Sensor	Interlaced Scan CCD
Sensor Size	1/4" (3.2 x 2.4 mm)
Day / Night	Yes
Minimum Illumination	Color: 2.5 lux at F1.8 (50 IRE, 5600 °K); B/W: 0.07 lux at F1.8 (50 IRE, 5600 °K, Max. AGC, Max. Sense Up)
Color to B/W switch	DSP based switch, configurable
Mechanical IR Cut Filter	No
IR Sensitivity Range	No
IR LED	No
Electronic Shutter	1/100 - 1/10,000 sec (NTSC); 1/100 - 1/10,000 sec (PAL) (manual mode) 1/60 - 1/120,000 sec (NTSC); 1/50 - 1/120,000 sec (PAL) (auto mode)

• Lens

Focal Length	Zoom, f4.2 - 42 mm / F1.8 - 2.9
Iris	Auto iris
Focus	Auto Focus
Horizontal Viewing Angle	48° - 5°

• PTZ

Zoom Ratio	10x optical; 10x digital
Manual Panning Speed	20° ~ 90°/s
Manual Tilting Speed	20° ~ 70°/s
Panning Range	0° ~ 354°
Tilting Range	-25° ~ 90°
Control	Remote manual control; 32 preset points; 10 preset tours; auto scan
Absolute Position	Yes

• Video

Compression	MPEG-4 SP, MJPEG
Maximum Frame Rate vs. Resolution	30 fps at 720 x 480 (Full D1, NTSC); 25 fps at 720 x 576 (Full D1, PAL); 30 fps at 640 x 480 (VGA, NTSC); 25 fps at 640 x 480 (VGA, PAL); 30 fps at 352 x 240 (CIF, NTSC); 25 fps at 352 x 288 (CIF, PAL); 30 fps at 160 x 112 (QCIF, NTSC); 25 fps at 176 x 144 (QCIF, PAL)
Multi-Streaming	Multiple streams based on single configuration
Bit Rate	28 Kbps - 3 Mbps (per stream)
Bit Rate Mode	Constant, Variable
S/N Ratio	More than 44 dB
Image Enhancement	Backlight compensation; White balance: automatic, predefined and manual; Brightness; Saturation; Contrast; Automatic gain control; Auto exposure: automatic, predefined and manual
Privacy Mask	1 configurable region
Text Overlay	User defined text on video
Image Orientation	Image flip and mirror

• Audio

Compression	8 kHz, Mono, PCM, 16 bit encoding
Audio-In	3.5 mm Phone Jack
Audio-Out	3.5 mm Phone Jack

• Network

Protocol & Service	TCP, UDP, HTTP, HTTPS, DHCP, PPPoE, RTP, RTSP, DNS, DDNS, NTP, ICMP, ARP, IGMP, SMTP, FTP, UPnP, SNMP, Bonjour
Ethernet Port	1, Ethernet (10/100Base-T), RJ-45 connector
Security	IP address filtering; HTTPS encryption; Password protected user levels

• Alarm

Alarm Trigger	Video motion detection (3 regions); External device through digital input
Alarm Response	Notify control center; Go to PTZ preset point or preset tour; Change camera settings; Command other devices; E-mail notification with snapshots; Upload video, snapshot to FTP server; Activate external device through digital output

• Interface

Digital Input	1, TTL, terminal block
Digital Output	1, TTL, terminal block

• General

Power Source / Consumption	PoE Class 3 (IEEE802.3af) / 5.8 W; DC 12V / 4.8 W
Weight	550 g (1.21 lb)
Dimensions (Ø x H)	132 mm x 132 mm (5.20" x 5.20")
Mount Type	Surface, Flush, Wall, Pendant, Pole, Corner
Operating Temperature	0 °C ~ 45 °C (32 °F ~ 112 °F)
Approvals	CE, FCC

• Integration

Unified Solution	Fully compatible with ACTi software
ISV Integration	Software Development Kit (SDK) available
Firmware Access Browser	Microsoft Internet Explorer 6.0 or newer